

# GOING GREEN GREEN FACILITIES @ BEL-AIR

綠色生活@貝沙灣  
屋苑回收設施



Make a Difference in a Community  
為我們的社區帶來改變

Recycling Facilities  
回收設施

Community & Recycling  
Activities 社區及回收活動



貝沙灣





## SUSTAINABLE LUXURIOUS LIVING ENVIRONMENT

### 可持續奢華生活享受

Sustainability does not mean compromising quality or luxury, we are committed to the highest integrity, with premium management for quality living and continue to engage our community in the many ways we can, to support a greener, more sustainable environment within the residences.

可持續並不代表要跟優質生活作出妥協。我們致力為住戶提供卓越物業管理服務，締造理想生活環境，我們將繼續把綠化意識推介予住戶，冀能與大家攜手讓貝沙灣更具可持續性。





# RECYCLING ITEMS 回收項目



## Papers 紙張



All Tower Refuse Storage &  
Material Recovery Rooms  
各樓層垃圾儲藏及物料收集房



Office Paper  
辦公室用紙

Letters & Envelopes  
信紙及信封

Newspaper  
報紙

Cardboard  
卡紙

Magazines/Catalogs/Phone Books  
雜誌/名錄/電話簿

Paperback Books  
平裝版書本



Paper/Magazine Laminated  
with Plastic  
膠面紙張/雜誌

Paper Cups  
紙杯

Napkins, Paper Towels  
餐巾、紙巾

Paper with Contaminated with  
Oil, Food or Paint...etc  
沾有油、食物或油漆紙張

Drink/ Cereal Box  
飲品/穀物包裝盒

Thermal Induction Paper  
熱感紙



Break down and  
flatten cardboard  
boxes  
剪開及壓平紙箱



## Metals 金屬



All Tower Refuse Storage &  
Material Recovery Rooms  
各樓層垃圾儲藏及物料收集房



Steel, Aluminum and  
Metal Containers  
不銹鋼、鋁及鐵容器



Chemical & Paint  
Containers  
化學品及油漆容器



Empty & rinse  
清空及清洗乾淨  
Remove labels & lids  
移除招紙及蓋

Aerosol Spray Can  
噴霧容器

Potato Chips Cans  
薯片罐

# RECYCLING ITEMS 回收項目



## Plastics 塑膠



All Tower Refuse Storage &  
Material Recovery Rooms  
各樓層垃圾儲藏及物料收集房



Plastic containers  
like milk, juice, soft  
drinks, personal care  
and detergent bottles  
塑膠容器例如牛奶、  
果汁、汽水、個人護  
理及清潔劑樽



Plastic Bags  
膠袋

Rubber & Silicon  
Products  
橡膠及矽膠製品

CD & Polyfoam  
光碟及發泡膠



## Glass 玻璃



All Tower Refuse Storage &  
Material Recovery Rooms  
各樓層垃圾儲藏及物料收集房



Bottles and Jars  
玻璃樽及瓶子



Chemical Containers  
化學品容器

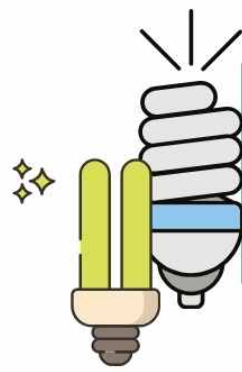
Temper, laminated or  
strengthened glass  
鋼化、夾層或強化玻璃



Empty & rinse  
清空及清洗乾淨  
Remove labels & lids  
移除招紙及蓋



# RECYCLING ITEMS 回收項目



## Fluorescent Lamps 慳電膽及光管



Service Centres  
服務中心



Compact Fluorescent  
Lamps  
慳電膽



Old Style Incandescent  
Bulbs  
舊式烏絲燈膽

Fluorescent Lamps  
(straight tubes and other  
shapes)  
熒光燈管(直管和其他形狀)

MORE INFO



High Intensity Discharge  
(HID) Lamps  
高強度氣體放電燈



Please used lamps in the  
packaging that comes with new  
lamps before depositing them in  
the collection box for recycling.  
請用新燈管的包裝物料把舊燈管裝  
載好，才將燈管放入收集箱內回收



## Rechargeable Battery 充電池



All Tower Lobbies  
所有大廈大堂



Most of portable  
rechargeable batteries  
generated from  
household  
大部份家用電器及電子  
產品的專用充電池



Single Use Batteries  
一次性電池

Damaged Batteries  
損壞電池

MORE INFO



Cover the battery terminal with masking  
tape. This is a safety precaution to  
prevent contact between terminals or  
other metal surfaces during storage and  
transport.

在電池的金屬端子上貼上遮蔽保護膠紙  
(皺紋膠紙)，防止金屬端子在儲存及運送  
中意外觸碰，造成危險

# RECYCLING ITEMS 回收項目



## Used Clothes 舊衣



- Phase 1 - 3 期:**  
Next to Shuttle Lift Lobby at Podium Level  
平台近穿梭電梯大堂
- Phase 4 - 6 期:**  
Carpark on Podium Level  
near Motorcycle Space No.1  
停車場近平台電單車1號位之附近位置



Clean Clothes,  
Accessories, Textile  
潔淨的衣服、飾物、  
紡織物



Worn-out or Broken Clothing  
破損不潔的衣物

Uniforms  
制服

Used Intimate Clothing  
(Underwear, Socks or Towels)  
二手內衣、襪或毛巾等貼身衣物

Used Bed Mattresses or  
Bedding, Curtains  
二手床褥、床上用品或窗簾

MORE INFO



## Food Waste 廚餘



- Phase 1 - 3 期:**
- Next to Tower 1, Phase 2 at Podium Level  
平台第2期第1座旁
  - Next to Tower 7, Phase 1 at Podium Level  
平台第1期第7座旁
  - Carpark Area, CP1, outside Shuttle Lift Lobby  
停車場CP1層穿梭升降機大堂外
- Phase 4 - 6 期:**
- Phase 4 & 6 Main Refuse Collection Rooms  
第4及6期總垃圾收集站
  - Carpark Area, L7, next to Tower 8A, Phase 6  
第6期停車場L7層近第8A座



Collection Period  
收集時間:  
6:00pm - 10:00pm

Do not  
forget



Source separated food  
waste only  
只接受經源頭分類的廚餘



Non-recyclable items like  
oversized bones,  
oyster/clam shells,  
packaging materials,  
foamed polystyrene, straws  
and utensils...etc  
不可回收物如大型骨頭、蠔/  
蜆殼、食物包裝物料、發泡  
膠容器、飲管及餐具等

MORE INFO





# RECYCLING ITEMS 回收項目



## Beverage Carton 飲品包裝盒



### Phase 1 - 3 期:

Next to Tower 7, Phase 1 at Podium Level  
平台第1期第7座旁

### Phase 4 - 6 期:

Carpark (Podium Level) near Motorcycle Space No. 1  
停車場近平台電單車1號位之附近位置



All kinds of paper drink  
cartons  
各式飲品紙包盒

MORE INFO



*Do not  
forget*

1. Cut the carton 剪開紙包盒
2. Remove the plastic cover and/or  
straw 除去膠蓋及/或飲管
3. Wash, dry and press  
清洗、晾乾、按扁
4. Put it into designated recycling  
bin 放進指定回收箱



MORE INFO



## Contact Lens Blister Packaging 即棄隱形眼鏡盒



### Phase 1 - 3 期:

Shuttle Lift Lobby 穿梭電梯大堂

### Phase 4 - 6 期:

Service Centre 服務中心



Remove foil, make it clean and dry and Put it  
into collection bag (available at each Tower  
Concierge), envelope or plastic bag, then return  
to collection points

撕走錫紙面，清潔及抹乾眼鏡盒，放入指定收  
集袋(可於大堂索取)、信封或膠袋交回指定收  
集地點

# COMMUNITY & RECYCLING ACTIVITIES

## 社區及回收活動



Red Packet Charity Sales & Recycle  
利是封義賣及回收



Chinese New Year Gift  
Pack Donation  
賀年禮盒轉贈

Christmas & Peach  
Blossom Tree Recycle  
聖誕樹及桃花回收



Community  
Vegetable  
Garden  
社區園圃農田



Educational & Eco Events  
教育及環保活動



Recycling Day by  
Green@Community  
綠在區區回收日



**Smart Recycling System  
for residents to enjoy 24-  
hour recycling service &  
earn Green\$ anytime!**

**24小時運作的智能回收機  
方便住戶隨時投入回收物，  
並累積綠綠賞積分!**



Tower 1 of  
Phase 4 on  
Podium Level  
towards  
Carpark  
Entrance, next  
to PL5 Lift  
4期1座平台往  
停車場方向  
PL5升降機旁



### SMART RECYCLING PROCEDURES



Clean & Sort  
at Home  
家中先行  
清潔及分類



Activate Recycling  
Bin with Green\$  
QR Code  
以綠綠賞二維碼  
啟動智能回收箱



Recycle &  
Accumulate  
Green\$ Points  
放入回收物並  
累積綠綠賞積分



Redeem Gifts with  
GREENS (GREEN@  
Ap Lei Chau)  
於綠在鴨洲以綠綠賞  
積分換領禮品



Upcoming  
Events & News  
活動及資訊



Website &  
Mobile App  
網站及流動  
應用程式



WWW.BEL-AIR-HK.COM



Subscribe  
Estate & Club  
News  
登記接收屋苑及  
會所資訊

